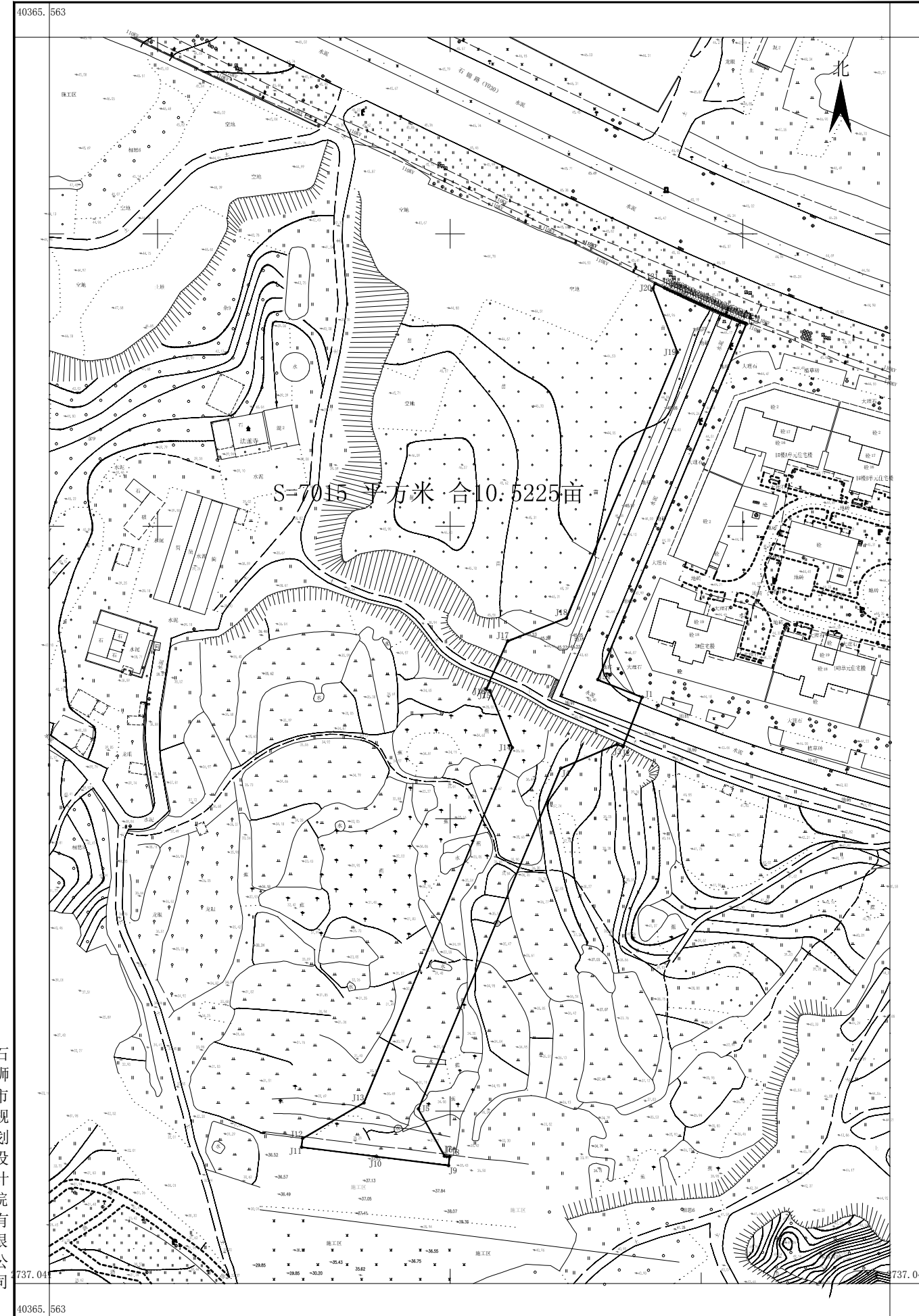


府园路延伸段—博学路道路新建工程界址图
2737.0-40365.6



石狮市规划设计院有限公司

2024年03月数字化制图。
CGCS2000坐标系，中央子午线120度。
1985国家高程基准，等高距为1米。

1:1200

测量员：陈伟强
绘图员：庄宇杰
检查员：郭先通

府园路延伸段—博学路道路新建工程界址点坐标表

CGCS2000坐标系，中央子午线120度。

界址点坐标表

点号	X	Y	边长
J1	2737241.484	40365765.434	18.11
J2	2737224.606	40365759.479	2.14
J3	2737225.381	40365757.484	20.97
J4	2737217.193	40365737.780	126.21
J5	2737100.735	40365689.132	18.45
J6	2737084.587	40365698.465	0.78
J7	2737084.465	40365698.822	1.01
J8	2737084.341	40365699.821	3.00
J9	2737081.364	40365699.449	24.84
J10	2737084.445	40365674.804	25.84
J11	2737087.652	40365649.161	3.00
J12	2737090.628	40365649.532	24.20
J13	2737102.764	40365670.469	131.68
J14	2737224.266	40365721.227	20.89
J15	2737243.705	40365713.392	1.48
J16	2737244.316	40365712.245	19.00
J17	2737260.704	40365719.492	21.54
J18	2737268.578	40365739.738	98.47
J19	2737339.434	40365777.494	23.43
J20	2737381.326	40365769.336	1.00

界址点坐标表

点号	X	Y	边长
J20	2737381.326	40365769.336	1.79
J21	2737382.972	40365770.033	3.66
J22	2737381.394	40365773.338	1.00
J23	2737380.975	40365774.247	1.00
J24	2737380.557	40365775.156	1.00
J25	2737380.140	40365776.066	1.00
J26	2737379.723	40365776.976	1.00
J27	2737379.310	40365777.887	1.00
J28	2737378.898	40365778.798	1.00
J29	2737378.486	40365779.710	1.00
J30	2737378.075	40365780.623	1.00
J31	2737377.666	40365781.536	1.00
J32	2737377.258	40365782.449	1.00
J33	2737376.851	40365783.364	1.00
J34	2737376.445	40365784.278	1.00
J35	2737376.041	40365785.193	1.00
J36	2737375.638	40365786.109	1.00
J37	2737375.236	40365787.026	1.00
J38	2737374.835	40365787.942	1.00
J39	2737374.436	40365788.860	1.00

界址点坐标表

点号	X	Y	边长
J39	2737374.436	40365788.860	1.00
J40	2737374.038	40365789.778	1.00
J41	2737373.641	40365790.696	1.00
J42	2737373.245	40365791.615	1.00
J43	2737372.850	40365792.535	1.00
J44	2737372.457	40365793.455	1.00
J45	2737372.065	40365794.375	1.00
J46	2737371.674	40365795.296	1.00
J47	2737371.285	40365796.218	1.00
J48	2737370.896	40365797.140	1.00
J49	2737370.509	40365798.063	1.00
J50	2737370.123	40365798.986	1.00
J51	2737369.739	40365799.910	1.00
J52	2737369.355	40365800.834	0.47
J53	2737369.155	40365801.271	131.86
J54	2737347.509	40365750.444	16.34
J1	2737241.484	40365765.434	1.00

S=7015 平方米 合10.5225亩

1954北京坐标系(88网)，中央子午线118.5度。

界址点坐标表

点号	X	Y	边长
J1	2736661.208	517450.035	18.11
J2	2736644.259	517443.665	2.14
J3	2736645.012	517441.662	20.97
J4	2736636.613	517422.449	126.21
J5	2736519.628	517375.083	18.45
J6	2736503.578	517384.183	0.78
J7	2736503.465	517385.951	1.01
J8	2736503.351	517385.951	3.00
J9	2736500.371	517385.612	24.84
J10	2736503.181	517360.935	25.84
J11	2736506.106	517335.258	3.00
J12	2736509.086	517335.596	24.20
J13	2736521.451	517336.398	131.68
J14	2736643.504	517405.819	20.89
J15	2736662.857	517397.971	1.48
J16	2736663.454	517396.618	19.00
J17	2736679.922	517403.885	21.54
J18	2736688.016	517423.843	98.47
J19	2736779.283	517460.799	23.43
J20	2736801.083	517452.201	1.00

界址点坐标表

点号	X	Y	边长
J20	2736801.083	517452.201	1.79
J21	2736802.736	517452.880	3.66
J22	2736801.194	517456.202	1.00
J23	2736800.785	517457.115	1.00
J24	2736800.377	517458.029	1.00
J25	2736799.970	517458.943	1.00
J26	2736799.565	517459.858	1.00
J27	2736799.161	517460.773	1.00
J28	2736798.758	517461.689	1.00
J29	2736798.356	517462.606	1.00
J30	2736797.955	517463.523	1.00
J31	2736797.556	517464.440	1.00
J32	2736797.158	517465.358	1.00
J33	2736796.761	517466.277	1.00
J34	2736796.366	517467.196	1.00
J35	2736795.972	517468.115	1.00
J36	2736795.579	517469.036	1.00
J37	2736795.187	517469.956	1.00
J38	2736794.796	517470.877	1.00
J39	2736794.407	517471.799	1.00

界址点坐标表

点号	X	Y	边长
J39	2736794.407	517471.799	1.00
J40	2736794.019	517472.721	1.00
J41	2736793.632	517473.644	1.00
J42	2736793.246	517474.567	1.00
J43	2736792.862	517475.491	1.00
J44	2736792.479	517476.416	1.00
J45	2736792.097	517477.340	1.00
J46	2736791.716	517478.266	1.00
J47	2736791.337	517479.192	1.00
J48	2736790.958	517480.118	1.00
J49	2736790.581	517481.045	1.00
J50	2736790.206	517481.972	1.00
J51	2736789.831	517482.900	1.00
J52	2736789.458	517483.828	0.47
J53	2736789.282	517484.267	131.86
J54	2736661.208	517450.035	16.34
J1	2736661.208	517450.035	1.00

S=7015 平方米 合10.5225亩